

TPC Mirage Operatory Stools.



Assistant's Stool AS-1101



Doctor's stool DR-1102

Installation and operation manual

Basic Parts and operation

Doctor's Stool



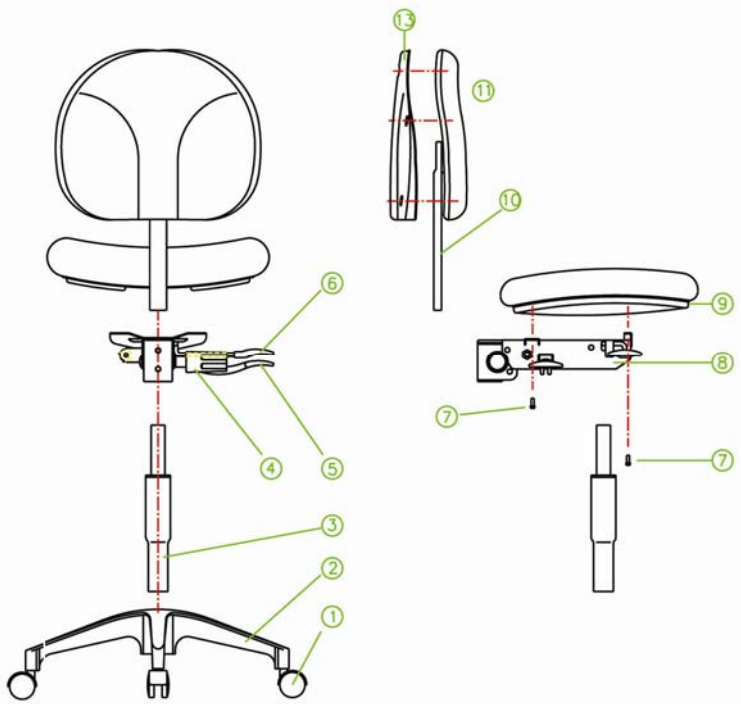
1. Casters
2. Base
3. Cylinder
4. Up / Down Lever
5. Tilt Lever
6. Height adjustment Knob
7. Seat Cushion
8. Backrest

Assistant's Stool



1. Casters
2. Base
3. Cylinder
4. Foot Ring
5. Knob
6. Assistant's Arm
7. Up / Down Lever
8. Height Adjustment knob
9. Seat Cushion
10. Body Rest
11. Backrest

Doctors Stool



No.	Part Number	Description	QTY
1	DR1102-1	Caster	5
2	DR1102-2	Base	1
3	DR1102-3	Cylinder	1
4	DR1102-4	Control Rod	1
5	DR1102-5	Tilt Lever	1
6	DR1102-6	Up / Down Lever	1
7	DR1102-7	Screws	4
8	DR1102-8	Seat Bracket	1
9	DR1102-9	Seat Cushion	1
10	DR1102-10	Backrest Stem	1
11	DR1102-11	Backrest Cushion	1
12	DR1102-12	TBA	
13	DR1102-13	Backrest Cover	1

Assistants Stool AS1101



No.	Part Number	Description	QTY
1	AS1101-1	Casters	5
2	AS1101-2	Base	1
3	AS1101-3	Cylinder	1
4	AS1101-4	Foot Rest	1
5	AS1101-5	Knob	1
6	AS1101-6	Retaining Ring	1
7	AS1101-7	Assistance Arm	1
8	AS1101-8	Up/Down lever	1
9	AS1101-9	Knob	1
10	AS1101-10	Ring	1
11	AS1101-11	Knob	1
12	AS1101-12	Washer	1
13	AS1101-13	Lock Washer	1
14	AS1101-14	Screw	4
15	AS1101-15	Seat bracket	1
16	AS1101-16	Seat Cushion	1
17	AS1101-17	Arm Ratchet Assy	1
18	AS1101-18	Assistance Arm cushion	1
19	AS1101-19	Plastic Back Cover	1