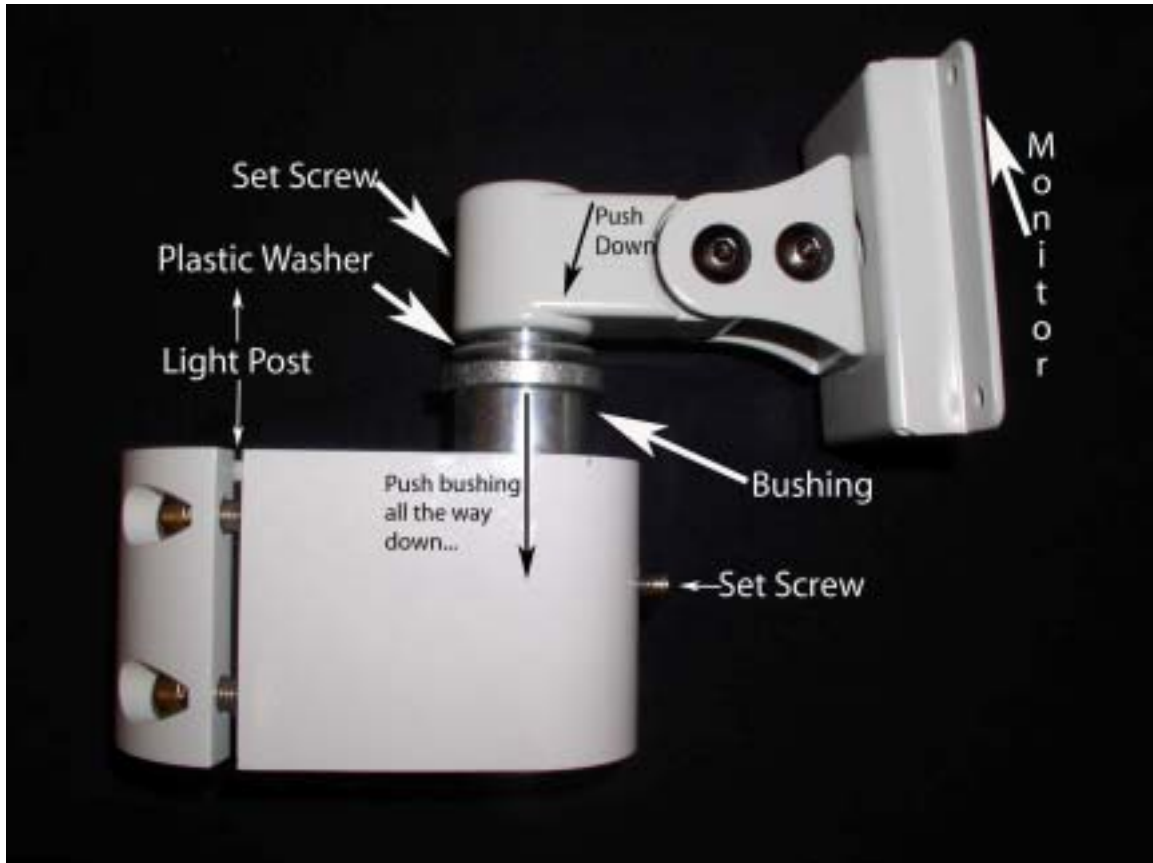


Post Mount Monitor Bracket

Part # WIC 800



1. Before tightening the setscrews, insure that the bushing is in all the way.
2. To protect the light post from scratches, install the two rubber pads on the inside of the light post bracket.
3. If setscrews are not tightened the monitor can be lifted out of the socket and possible damage may occur.
4. Do not over tighten the setscrews; this may cause the rotation of the bracket to be very tight.