

# Mirage Model 4000 Hydraulic Patient Chair



## Adjusting the headrest tension set screws

TPC

18525 E. Gale Ave

City Of Industry, CA 91748

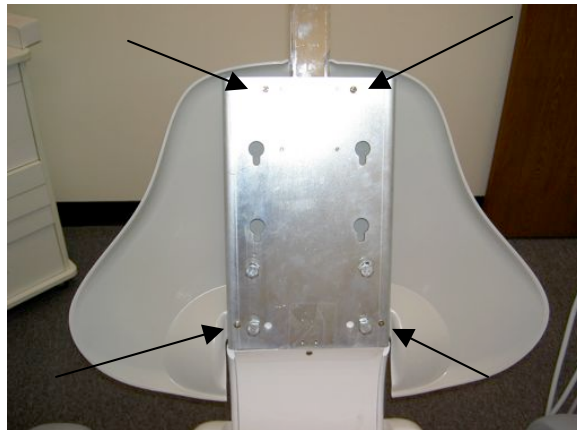
P626-810-4337 Fax 626-810-4245

[www.tpcdental.com](http://www.tpcdental.com)

1. Remove chair back upholstery by sliding it up to unlock it from the backrest frame.



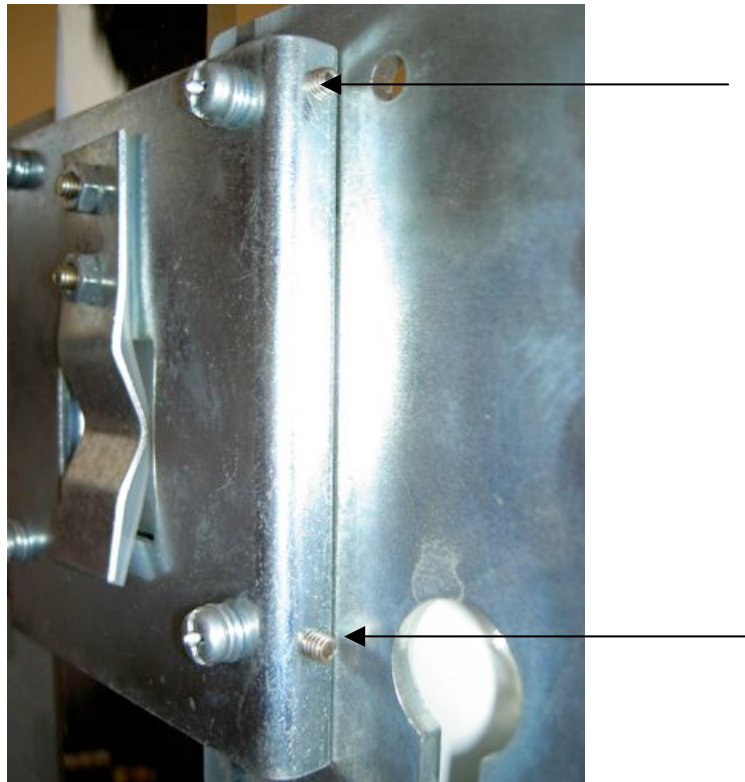
2. Once the backrest upholstery is removed, locate the 4 Phillip's head screws that fasten the backrest cover to the backrest frame.



3. Remove the two bottom screws first, and then proceed to remove the two top screws. Apply pressure to the backrest cover when removing the two top screws. This will prevent the backrest cover from falling on the ground.

4. Set the backrest cover aside.

5. Look on the backside of the backrest bracket and locate the two set screws on the right side of the backrest bracket.



6. Tighten set screws as needed. This adjustment will only correct a headrest that slides down on its own.

7. Put the backrest cover back in place to re attach the screws.
8. Fasten the top two Phillip head screws that you removed from the backrest cover in step 3. Hold the backrest in place while doing this to eliminate the backrest from falling and damaging the standoffs. Do not fasten screws too tightly as it may damage the standoffs.
9. Then attach the remaining screws to the bottom of the backrest cover.
10. Place the backrest upholstery back on the backrest frame and slide it down to lock it back in place.



11. You have now completed the procedure for tightening the tension on the headrest stem.