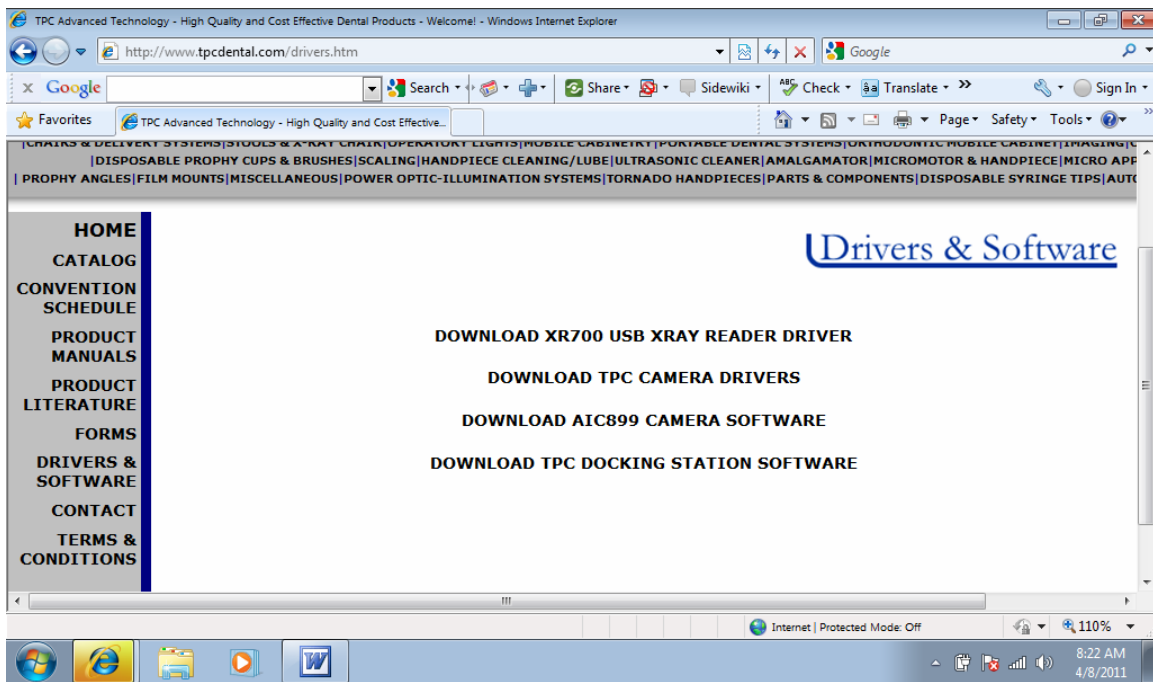
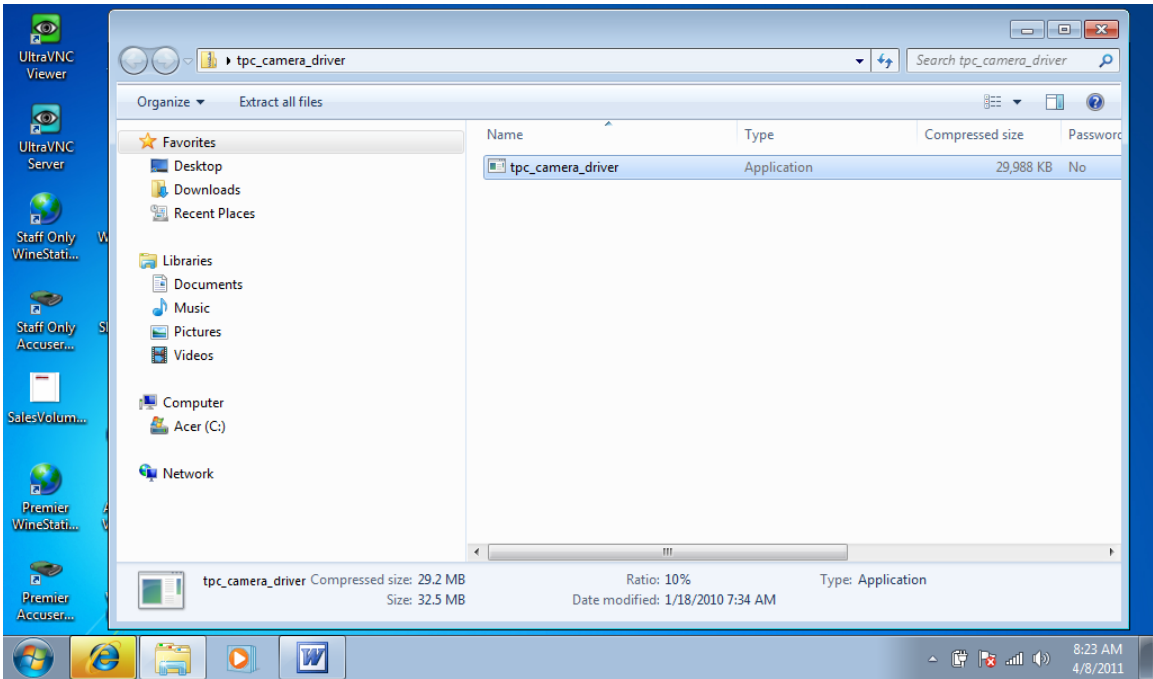


TPC Advance Cam Driver Installation with windows 7

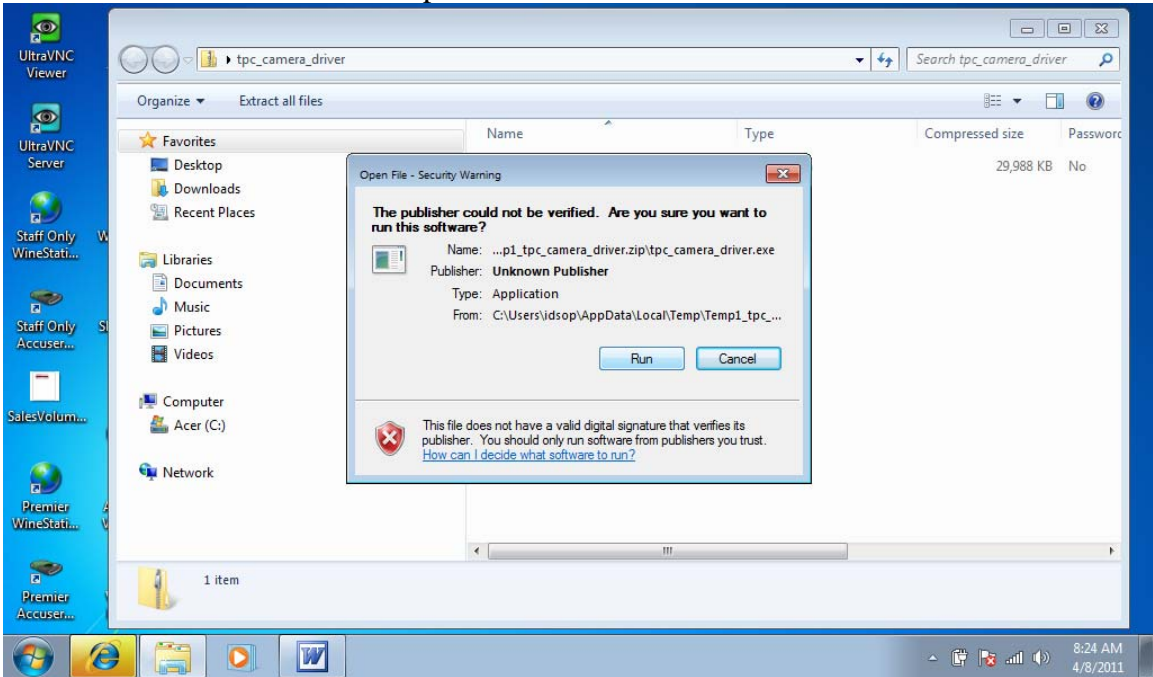
1. Download and install the following from www.tpcdental.com
 - http://www.tpcdental.com/drivers/tpc_camera_driver.zip
 - Cameras Drivers
 - http://www.tpcdental.com/drivers/AIC899_camera_software.zip
 - AIC899 Software
 - http://www.tpcdental.com/drivers/docking_station_software.zip
 - Docking station Software
 -



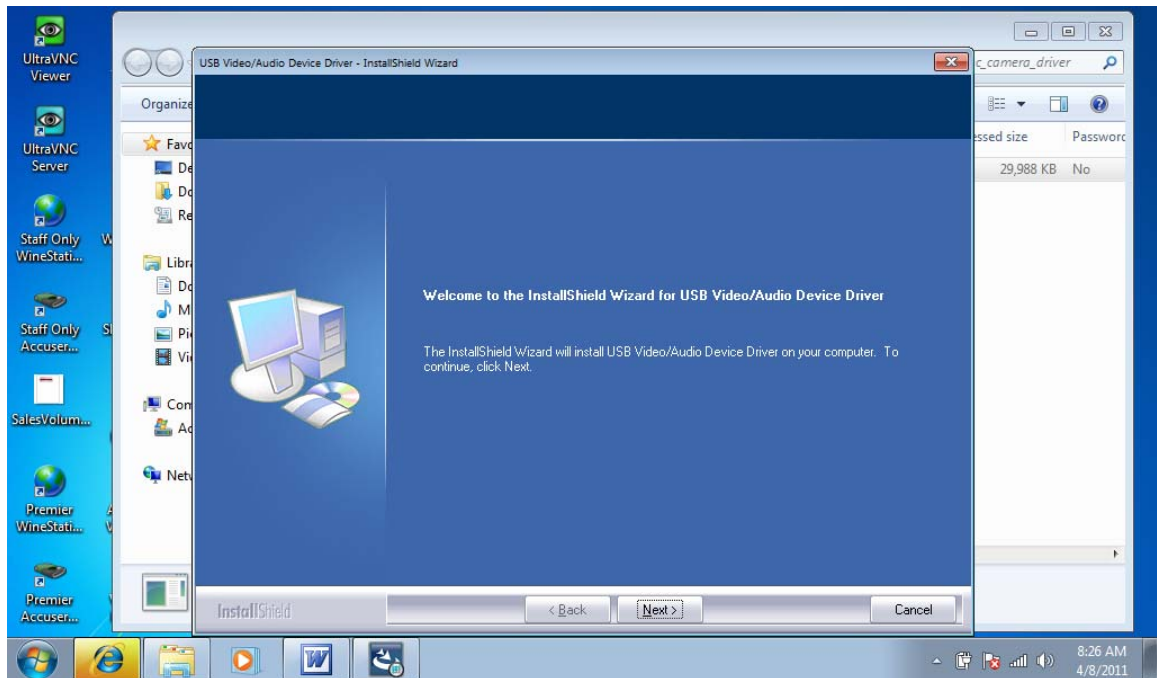
2. Run the desired files. You will have to install the driver file regardless of the installation of the AIC 899 or docking station software.
3. Driver Installation: Run the file setup.exe that was downloaded earlier.



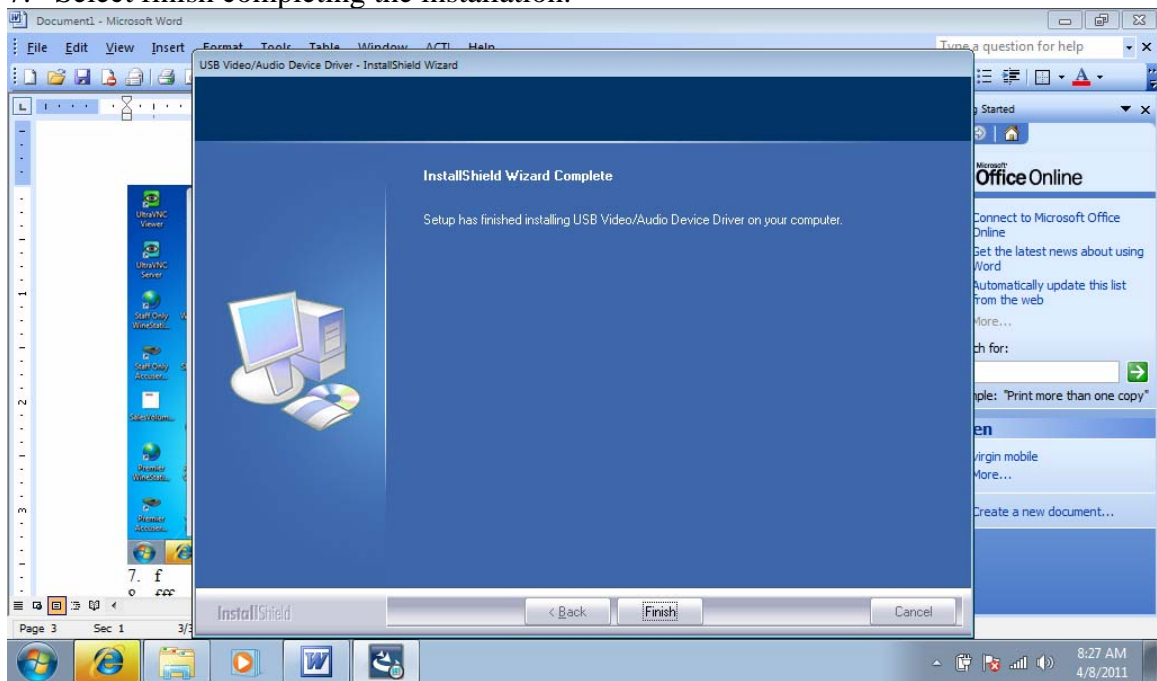
4. follow the prompts on the screen when installing the drivers.
5. Select run to run the file and preceded with the installation



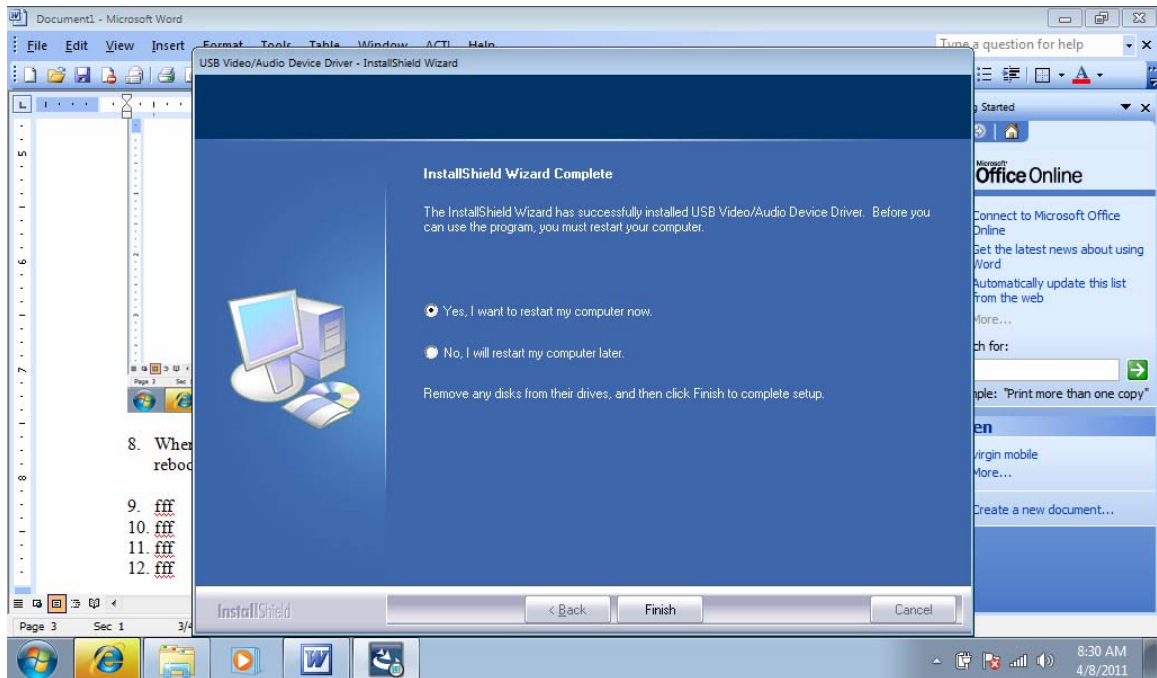
6. Select next to continue the installation.



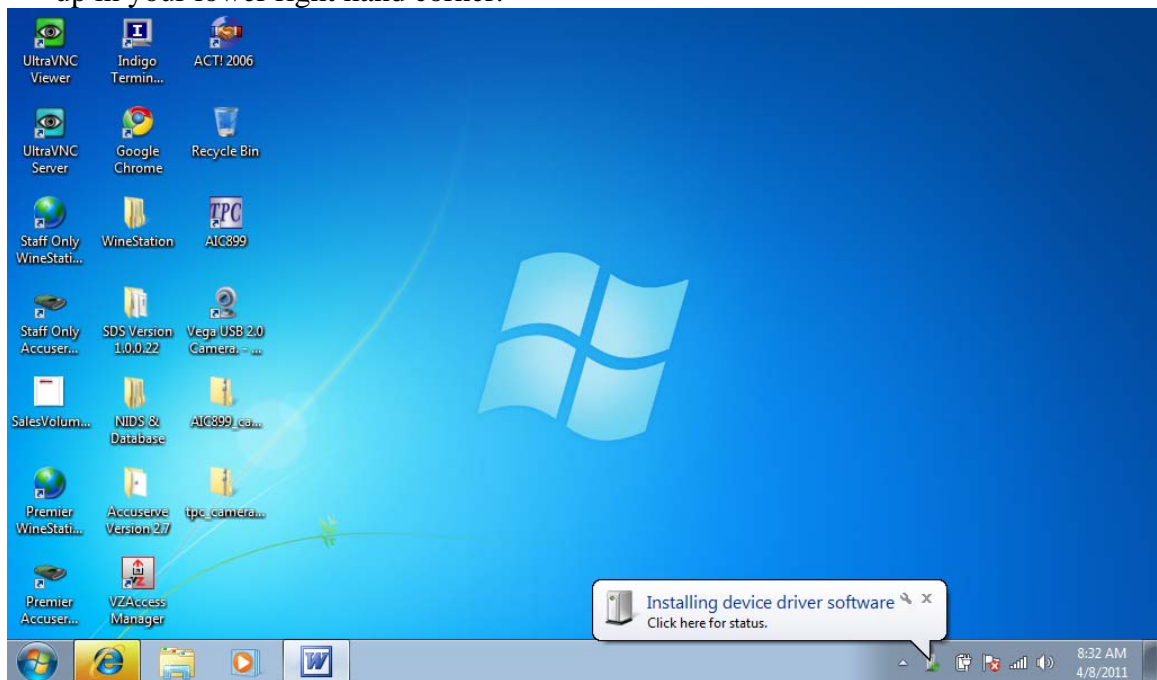
7. Select finish completing the installation.



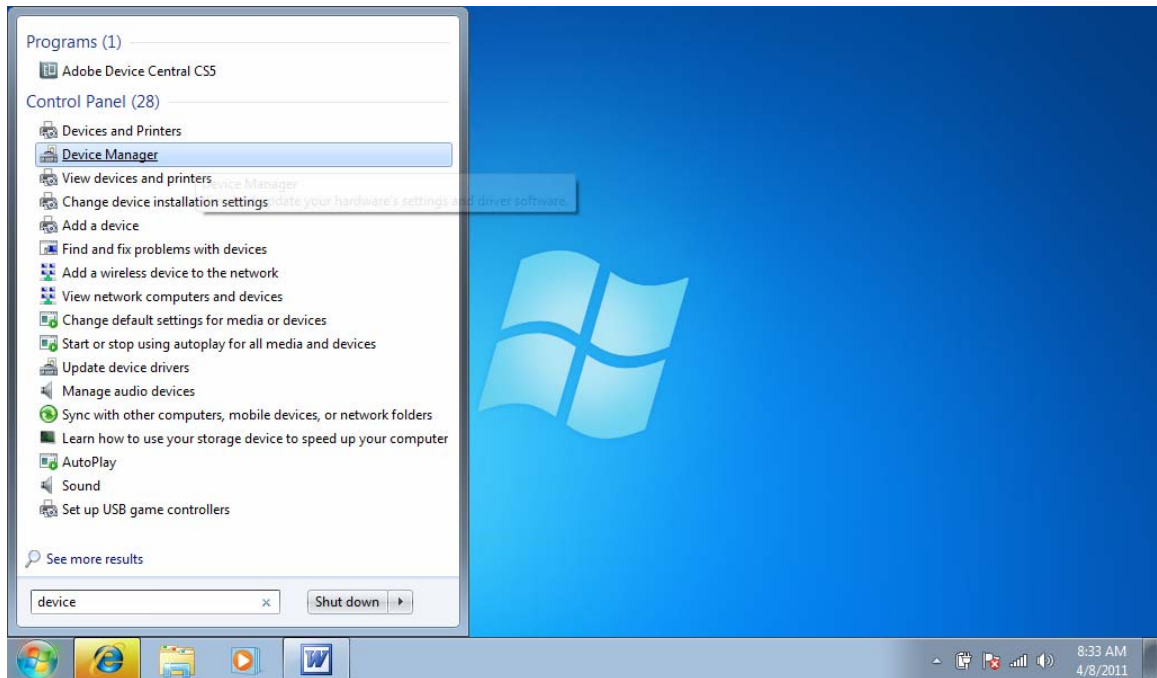
8. When prompted to restart the computer select yes and allow the computer to fully reboot.



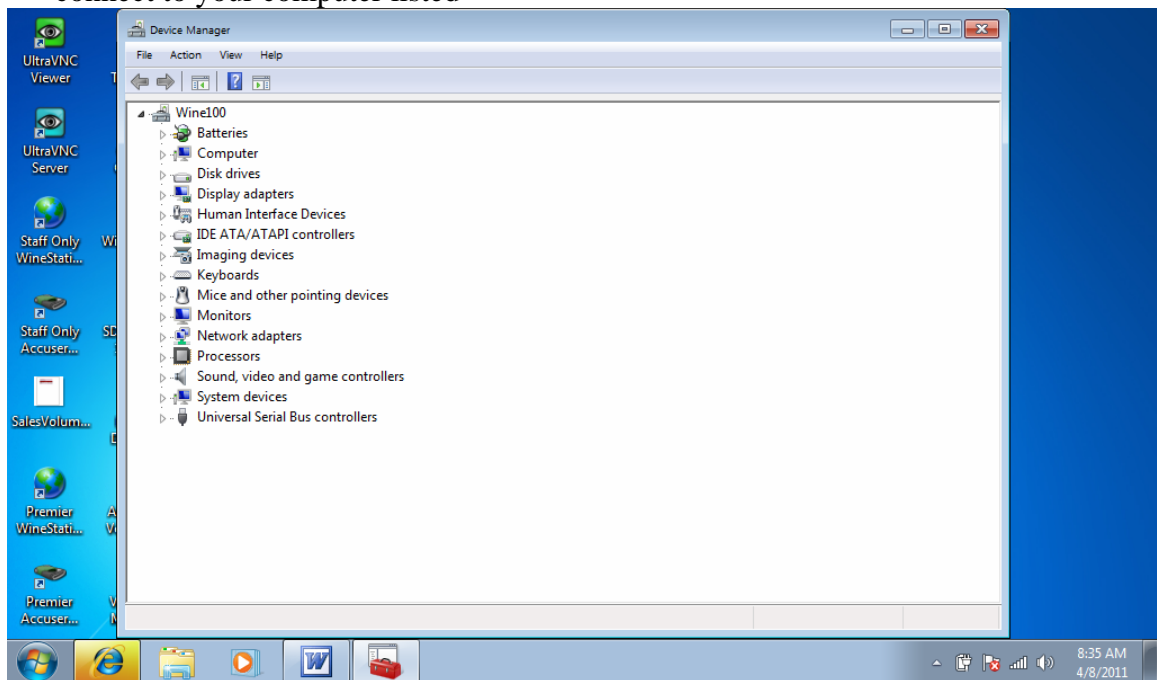
9. When connecting the USB camera to the computer you will see a screen that pops up in your lower right hand corner.



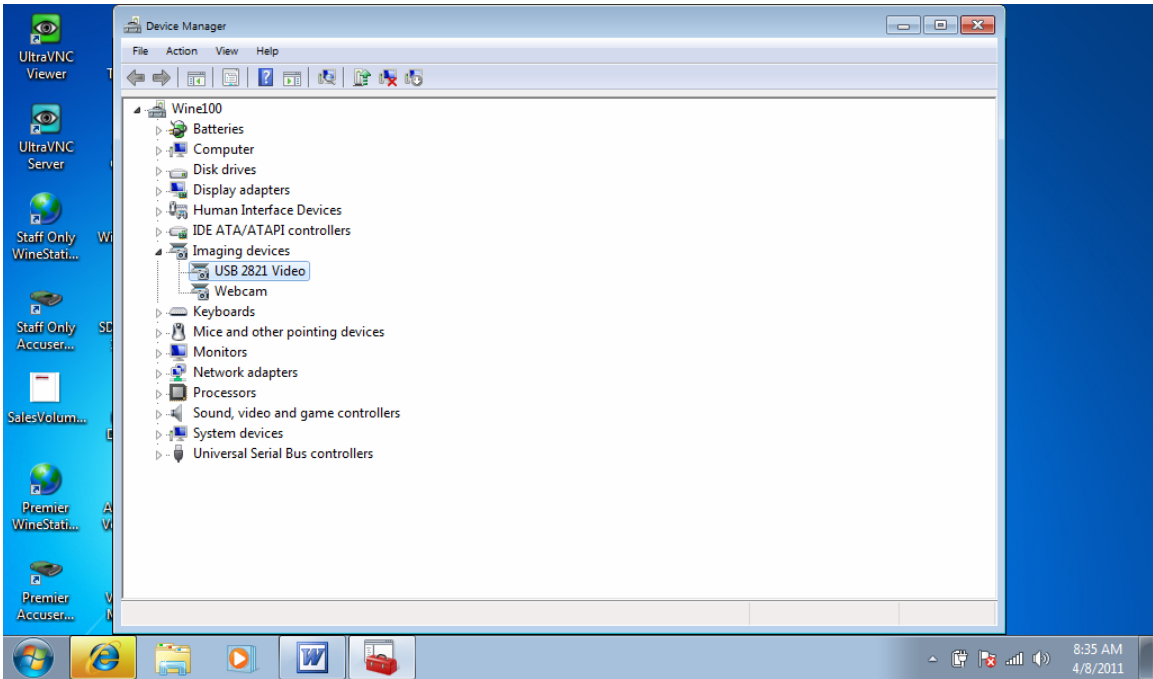
10. After the popup says your device is ready to use please select the start button on your main tool bar. Then with your keyboard type “device Manager”. Select from the list.



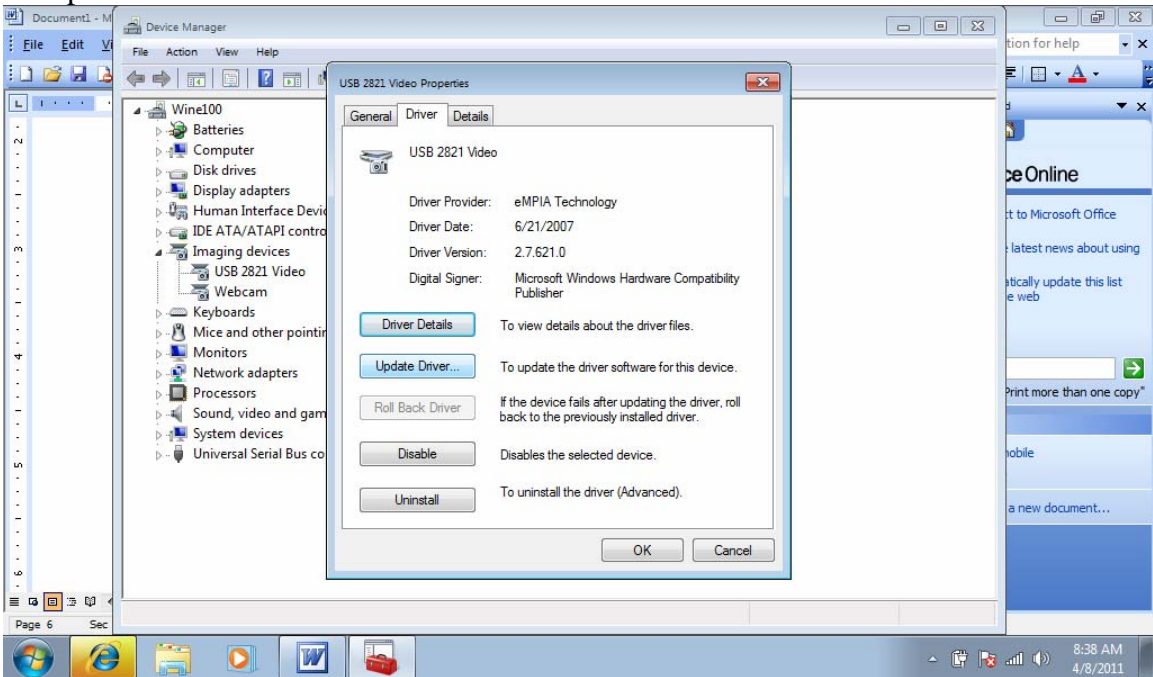
11. Once selected you will open to a new windows that has all the devices that are connect to your computer listed



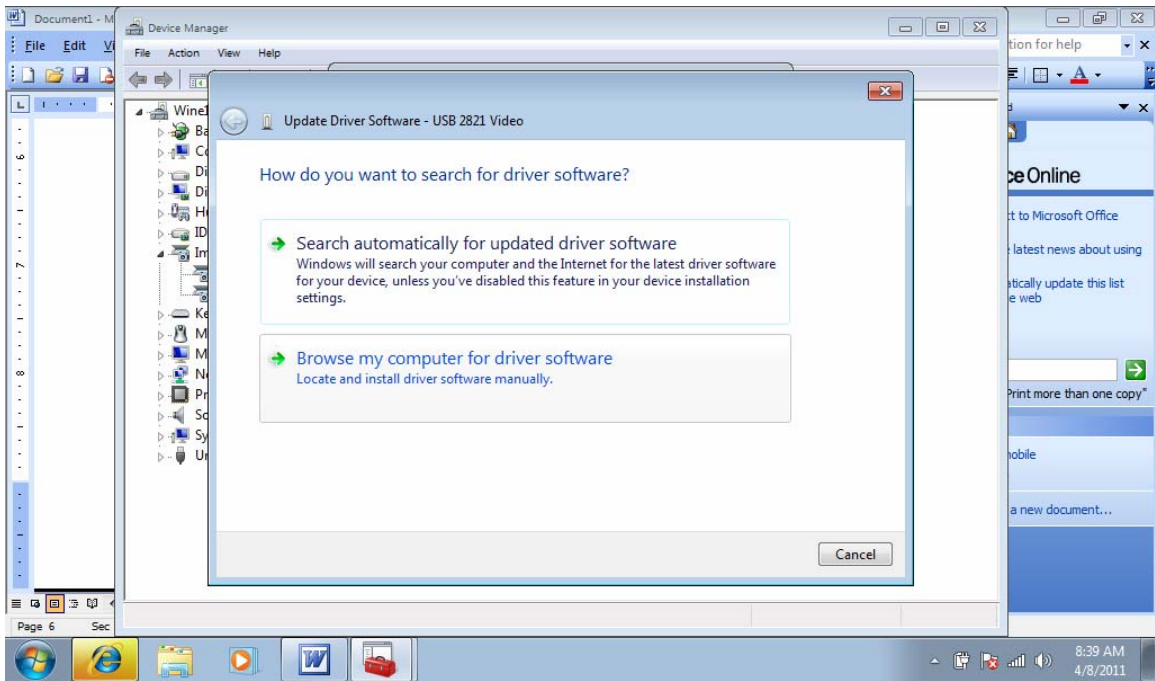
12. You want to look for the camera device under imaging devices. Your device name should read USB 2821 video. As shown below. If you don't see the device then check under sound video and game controllers. If the device is listed there then the incorrect driver has been installed. Follow the procedure below to update your cameras device driver.



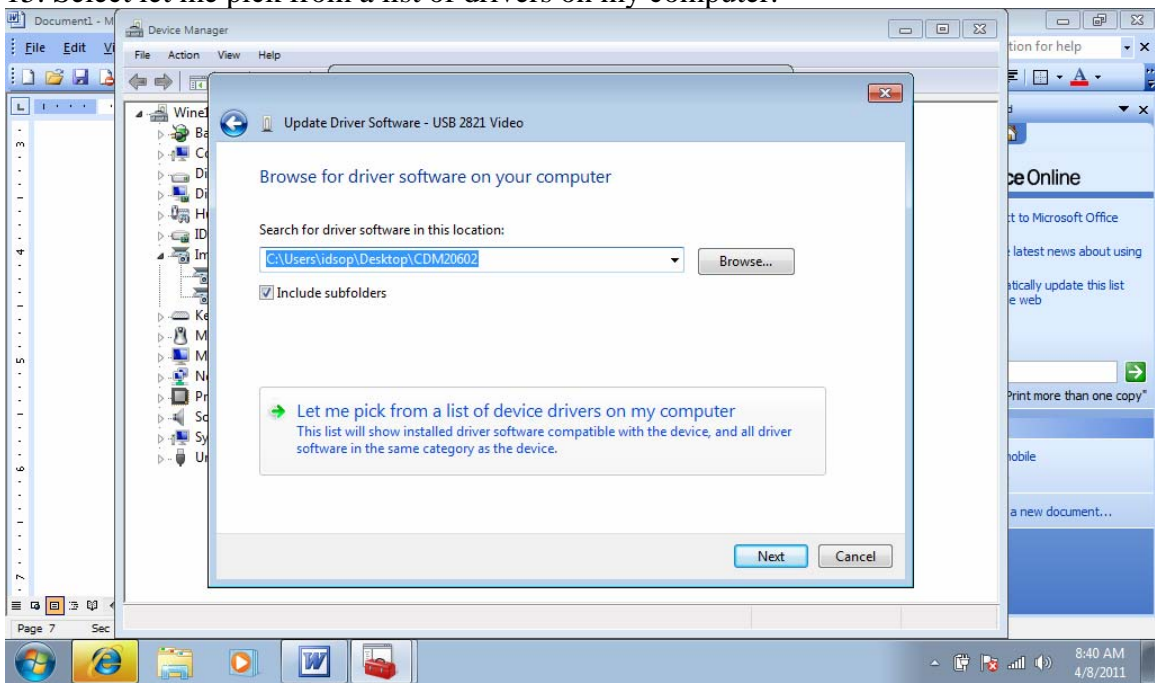
13. Double click on the device. It may say USB 2821, USB2821 Video or composite device if listed under UN known devices. Select the Driver tab and then select update driver.



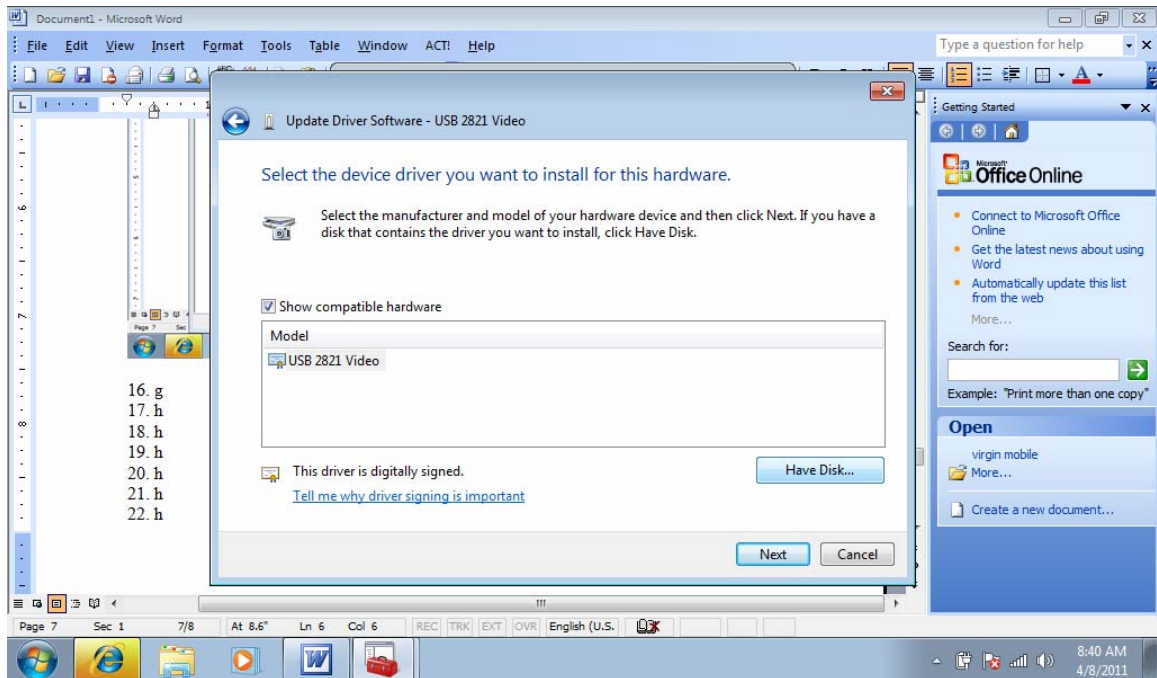
14. Select browse my computer for driver software.



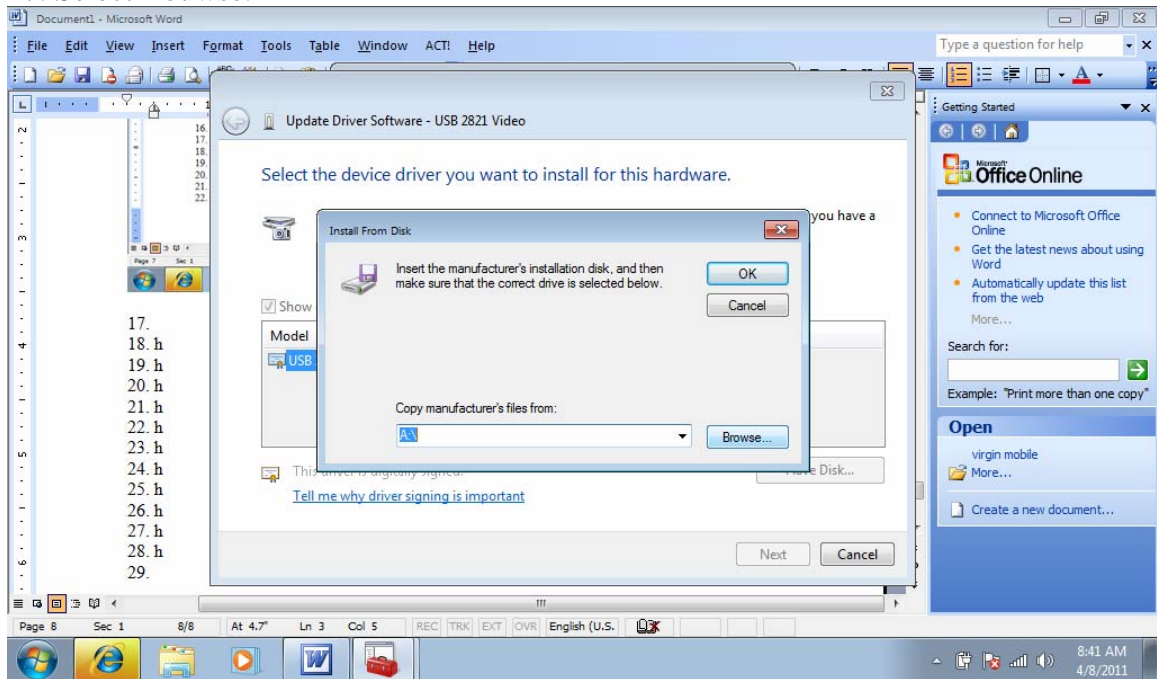
15. Select let me pick from a list of drivers on my computer.



16. Select have Disc.



17. Select Bouwse.

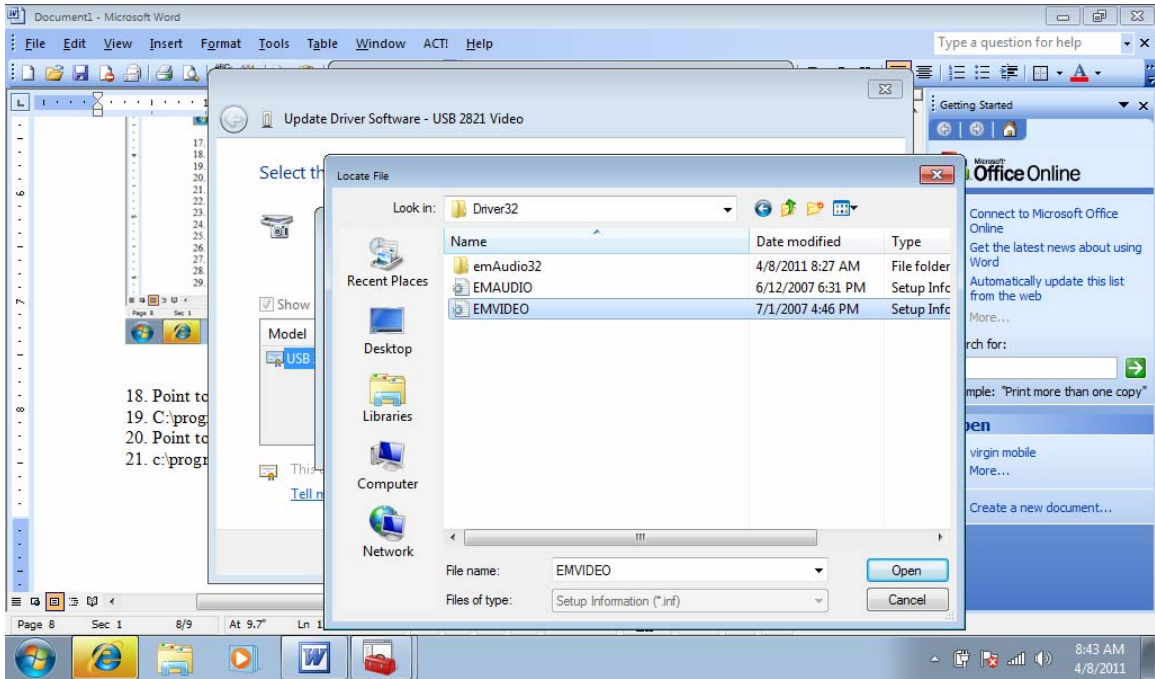


18. Point to the following locations. 32 bit setup...

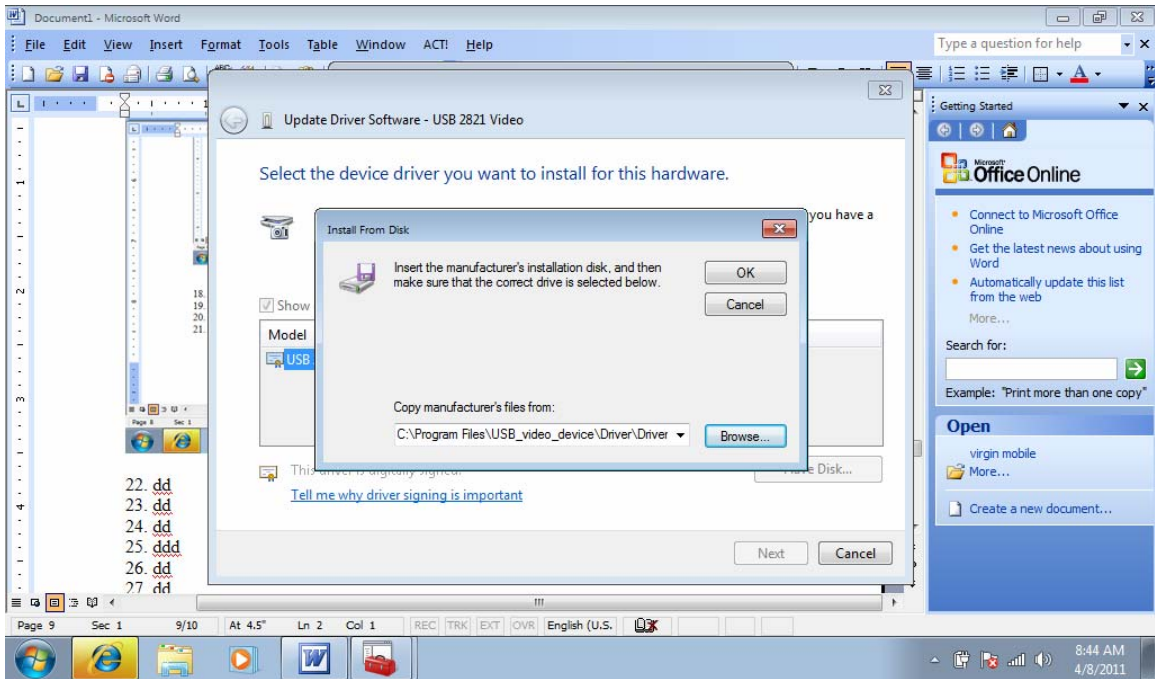
19. C:\programfiles\usb_video_device\drivers\32\emvideo.inf

20. Point to the following location for a 64 bit setup. Location is different then 32 bit.

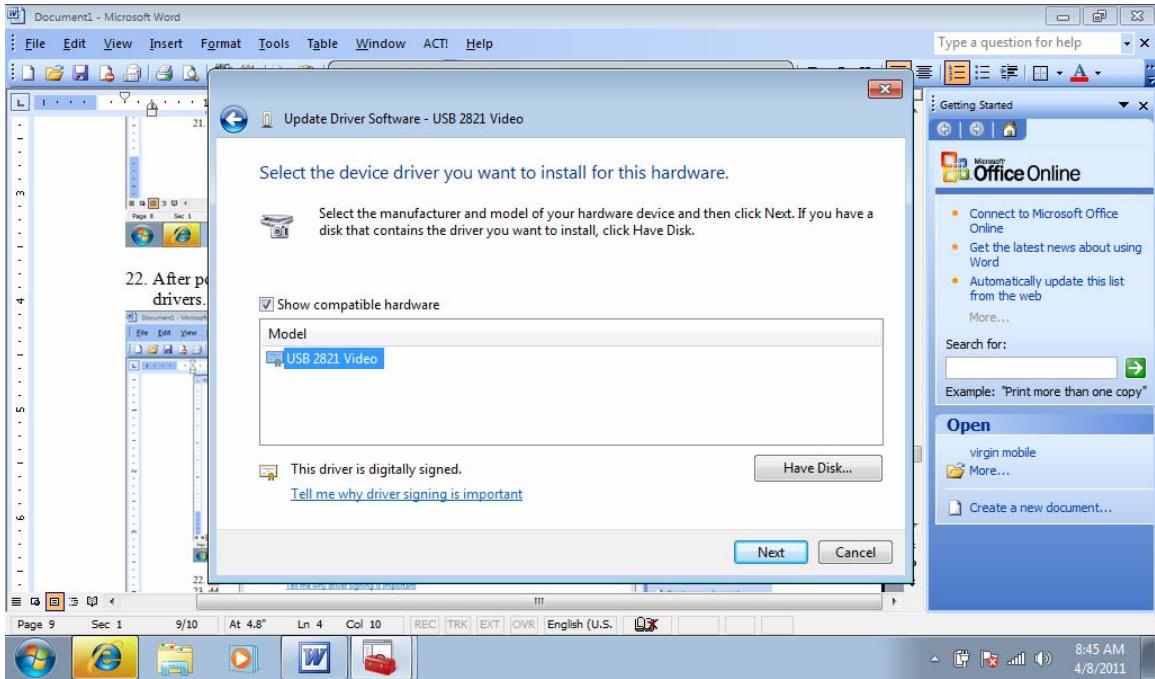
21. c:\programfilesX86\usb_video_device\drivers\64\emvideo64.inf



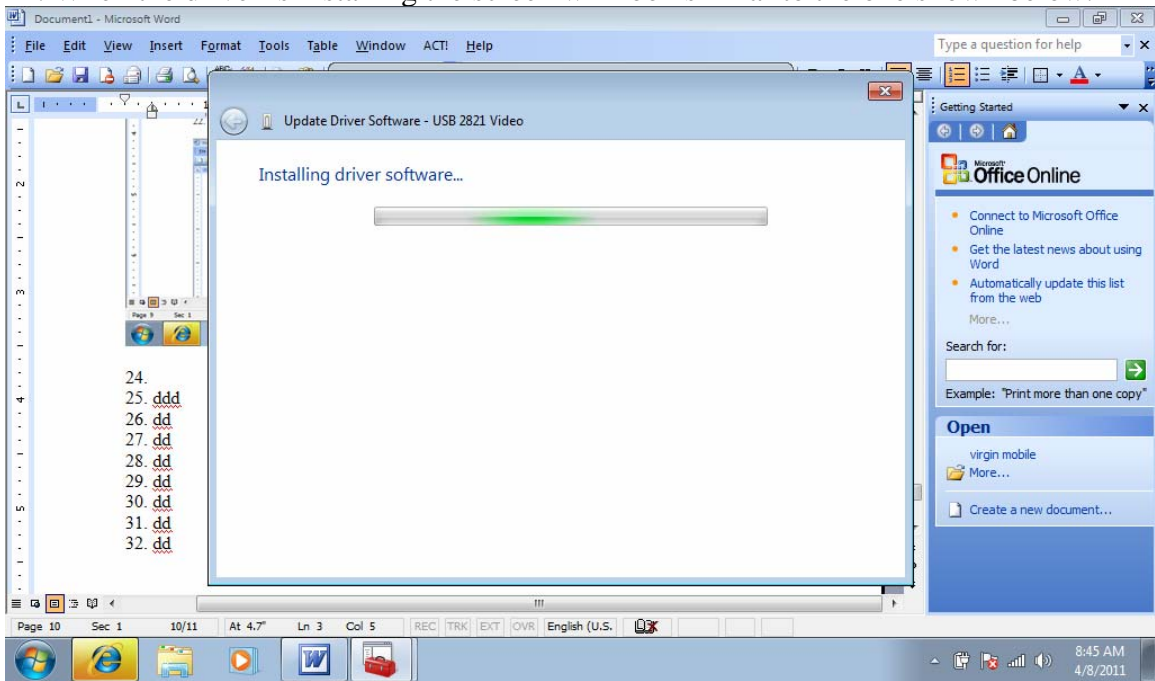
22. After pointing the device manager to the proper location click ok to install the drivers.



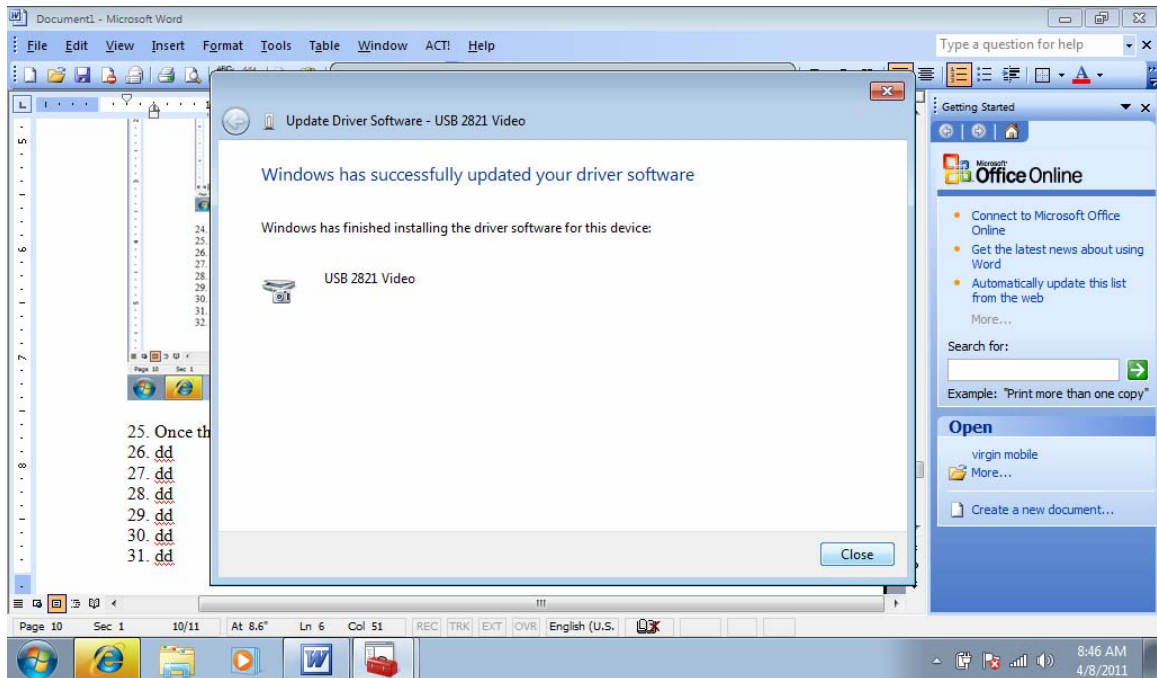
23. Click Next to continue the installation.



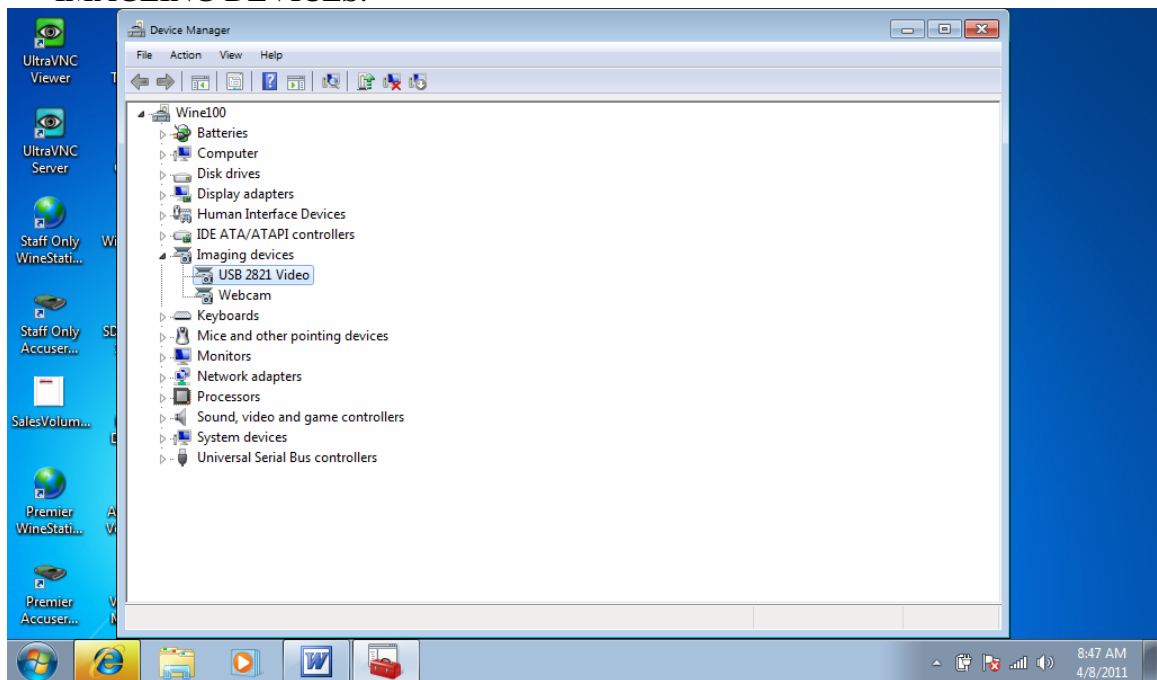
24. When the driver is installing the screen will look similar to the one shown below.



25. Once the installation is complete select close.



26. Verify that the device is listed in the correct location. USB 2821 VIDEO..
IMAGING DEVICES.



27. If your computer has a webcam you may want to disable it to reduce the risk of conflict with the two devices. To do this find the device and right mouse click on it. Select disable and it will turn the device off.

