

TPC

Laguna 2000

Electromechanical Patient Chair



Installation, Operation & User Manual

TPC

851 S. Lawson St.

City Of Industry, CA 91748

P626-810-4337 Fax 626-810-4245

1

www.tpcdental.com



Table on Contents:	Page
GENERAL INFORMATION	3
Installation and coordination	5
Motion Limit Controls	10
Operation instructions	11
Overview of controls	12
Main PCB Board	14
CLEANING & DISINFECTING GUIDE	18
Warranty	19
TROUBLE SHOOTING GUIDE	20


TPC

GENERAL INFORMATION

Model: Laguna 2000
Serial No: L2000-XXXXXXX
Rated Voltage: 120V-60Hz ~
Rated Current: 6A
Classification:
Mode of Operation: 1 min
Cool down period: 10 min
Manufactured: 1-2016

TPC



851 S. Lawson St
City of Industry, CA. 91748
Reference owner's manual 

The dental chair is marked with a product identification label including manufacture, serial number and date of manufacture. This label is located on the front lower left cover under the seat cushion.



The dental chair is marked with a Risk Class symbol. This label is located on the front of the dental chair base next to the main power switch.



The dental chair is marked with a main electrical grounding point symbol. This label is located on the front left side of the dental chair steel base frame, under the plastic cover.

TPC



The dental chair is marked with a main electrical grounding point symbol. This label is located on the front left side of the dental chair steel base frame, under the plastic cover.



The fuse is a 6 amp time lag, Fuse, 3AG, 1
1/4" L x 1/4" Dia. (31.8mm x 6.4mm)

The dental chair is marked with a fuse label symbol. This label is located under the pump cover on the front left side of the chair frame.

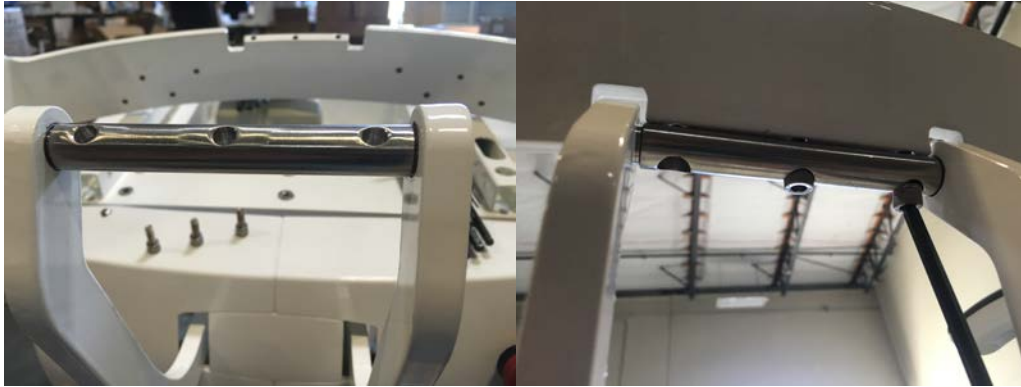
Transportation / Storage Information

- Do not store the dental chair in temperatures exceeding 130 degrees.
- Do not store the dental chair on its side. Always store upright on pallet.
- Do not stack more than 5 packaged chairs at a time on top of each other.
- Use approved pallet jack or forklift to move the dental chair.
- Do not attempt to move stacked dental chairs.
- Only store the dental chair in dry cool place.

TPC

Laguna 2000 Installation Instructions

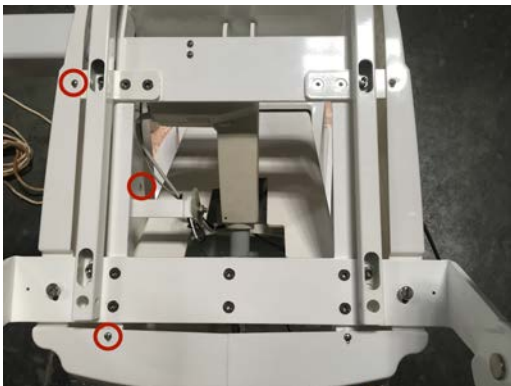
1. Connect the backrest support arm to the backrest bracket. Use the three supplied Allen screws.



2. Install chair backrest as shown in the images below. Using the 8 Allen screws, secure the backrest frame in place.



3. Remove the side cover where chair bracket is to be installed. You will also need to remove the lower front panel shown.



TPC

4. Install the chair bracket as shown, use the included 4 Allen screws.



5. Re install the chair side cover once the bracket is installed.



6. Mount the Cup to the chair bracket.



TPC

7. Install the backrest cushion onto the frame. Make sure you align the mounting points before sliding into place.



8. Install the seat cushion onto the seat frame. Make sure you align the mounting points before sliding into place.



TPC

9. Once you have confirmed the seat cushion is in place slide it toward the backrest to lock it in place. Secure the seat cushion in place using the two supplied Allen screws.



10. Insert the headrest stem as shown.



TPC

11. Install the Pump cover and rear base covers. Use the supplied screws to secure the covers in place.



TPC

Adjusting the chair limits

1. To adjust the seat height limit, loosen nut as shown. Once the nut is not secured, you can adjust the switches position to activate at a different height. Once adjusted, secure the adjusting nut.



Emergency Stop Button

The dental chair possesses an emergency stop button. In the event that you need to stop the chair movement push in the stop switch. To disengage, turn clockwise.



TPC

Laguna 2000

Electromechanical Patient Chair

Operating instructions





Overview of Foot controls

Overview of foot control operations

1. Seat Height Adjustments

- To raise, press down on upper area of the foot control disc.
- To lower, press down on the lower area of the foot control disc.

2. Backrest Adjustments

- To raise, press down on right side of the foot control disc.
- To recline, press down on left side of foot control disc.

3. Preset Operation

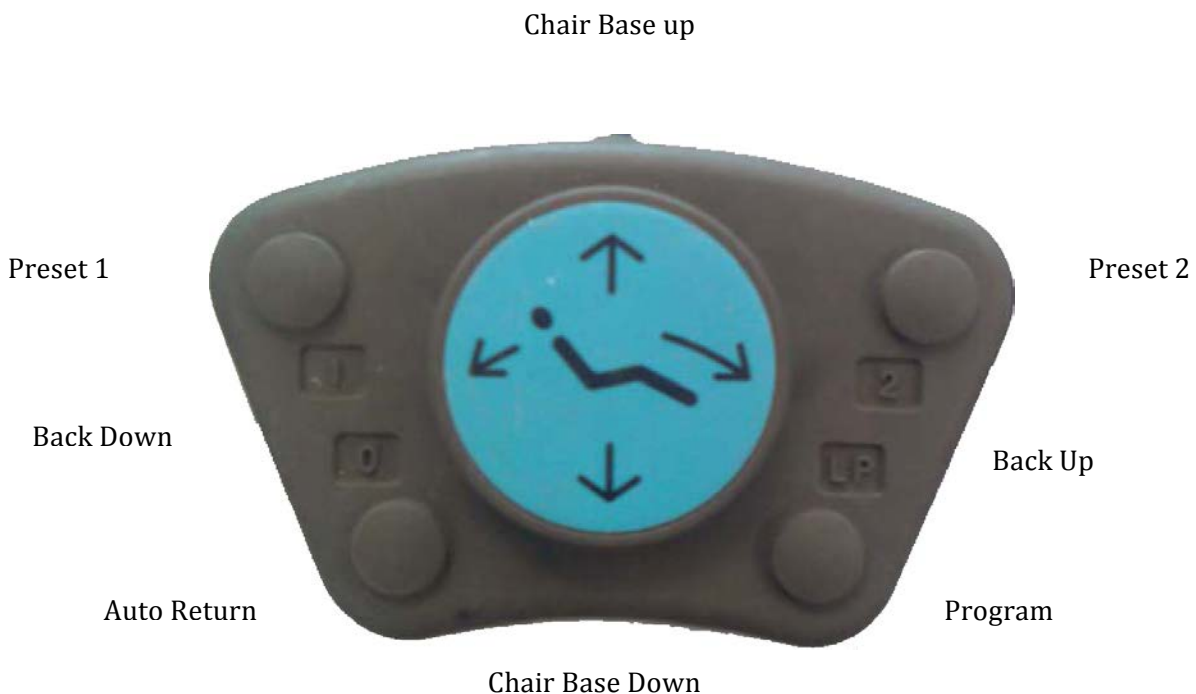
- Momentarily press pre set switch (#1, or #2) on the foot control.

4. Automatic Return

Momentarily press 0 switch on foot control to activate chair to return to normal position.

5. LP Program

To program a preset, move chair to desired position. Press LP, then Press the memory position 1 or 2. Then Press LP again, this will be accompanied by a longer tone when complete.



Safety Plate

Safety plate is provided in the backrest cover to stop motion of chair when object is accidentally caught underneath.



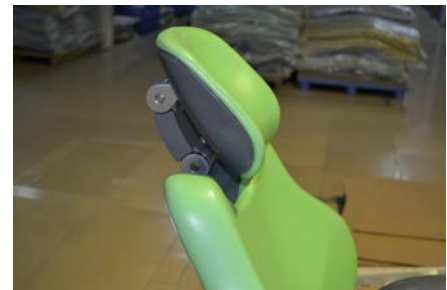
7. Armrest Rotation

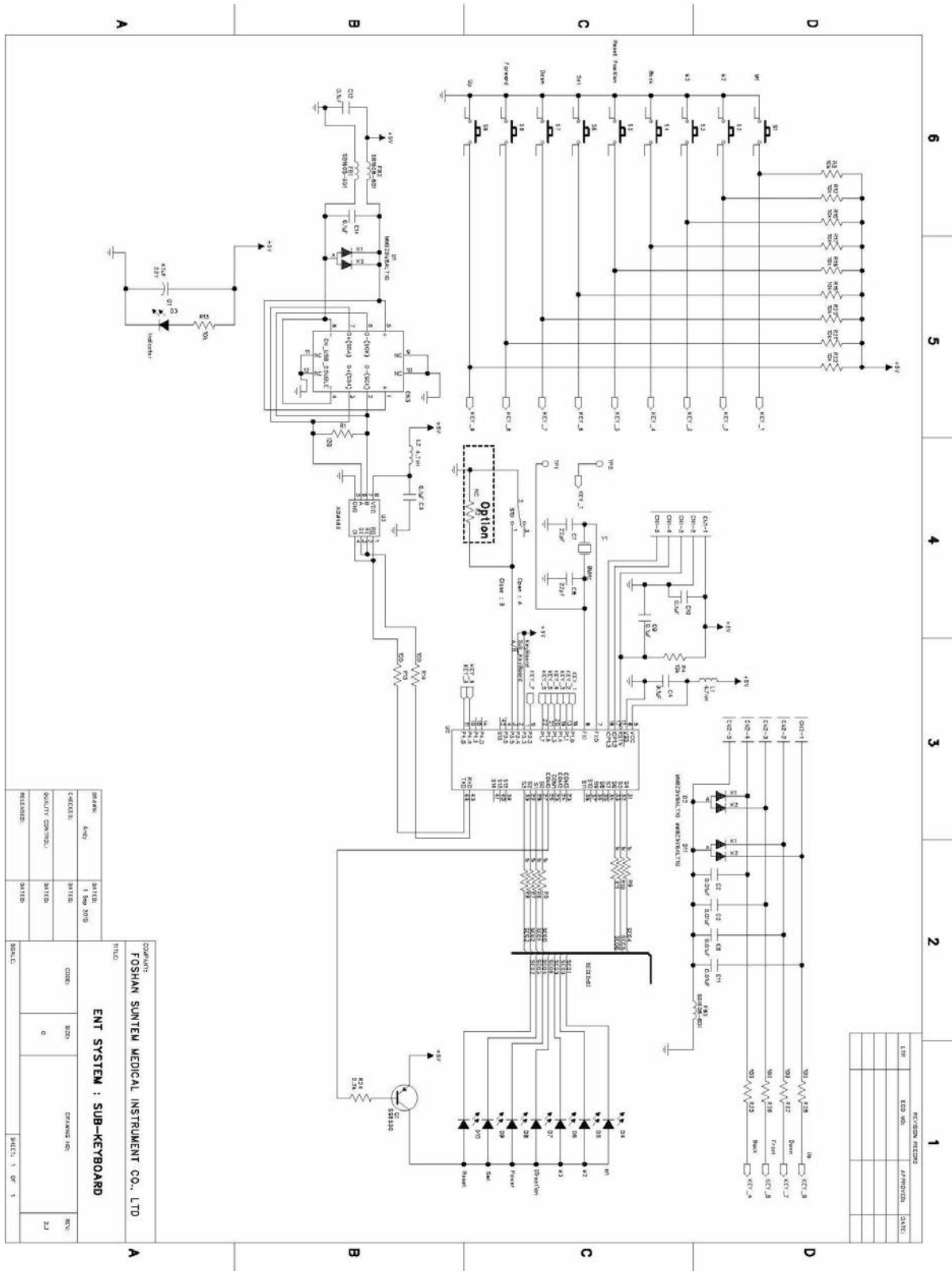
Either armrest can be rotated upward by grasping the end portion of armrest, pulling upward.



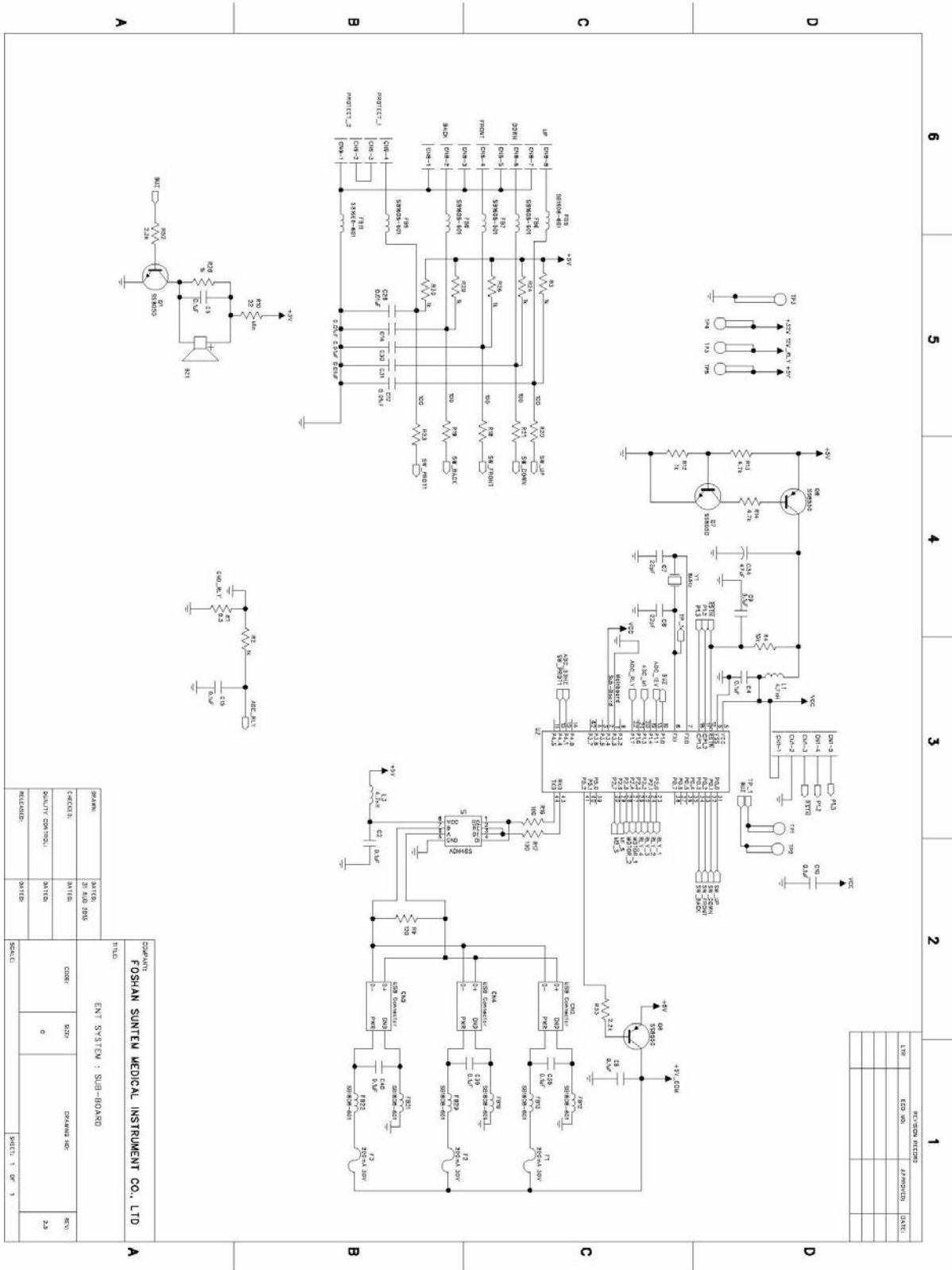
8. Headrest Adjustments

Height of headrest can be adjusted simply by pulling headrest up or down due to friction mount incorporated in backrest. Angle of articulating headrest can be changed by releasing slide bar on headrest stem

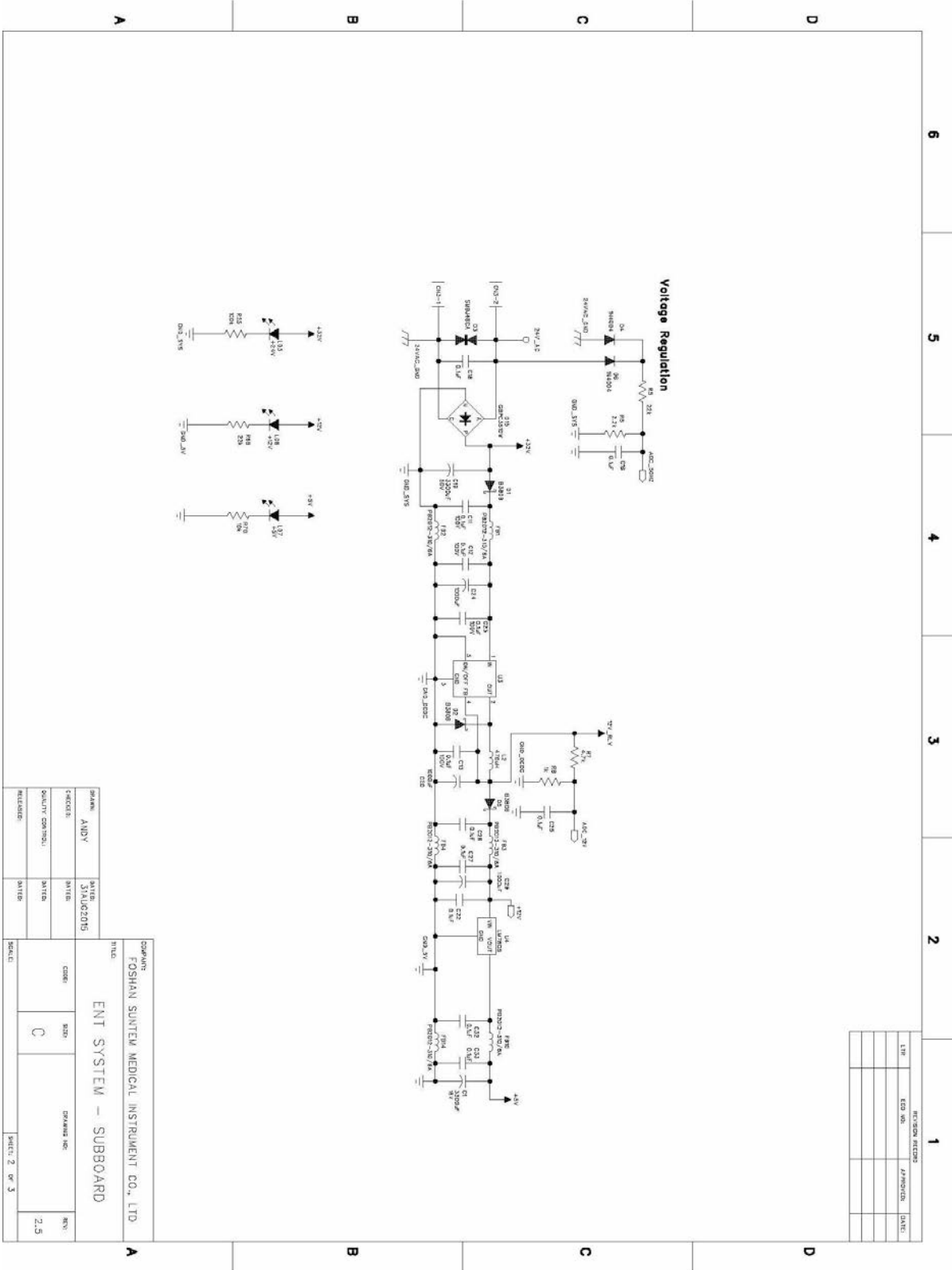


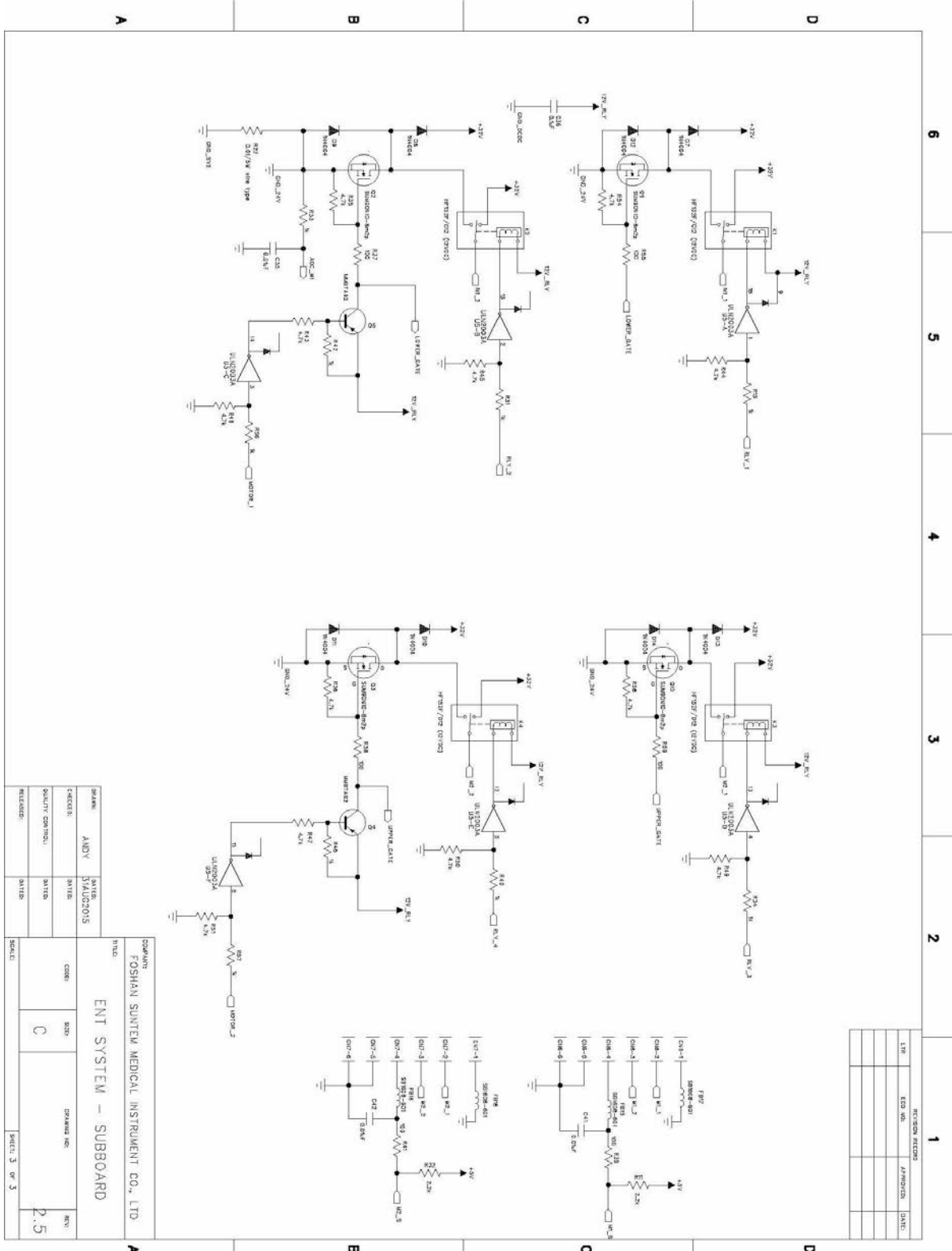


COMPANY:		FOSHAN SUNTEK MEDICAL INSTRUMENT CO., LTD	
TITLE:		ENT SYSTEM : SUB-KEYBOARD	
DESIGNER:	DATE:	CHECKER:	DATE:
AWAY	1 Sep 2018		
QUALITY CONTROL:	DATE:	DRAWER NO.:	REV.:
		0	23
RELEASED:	DATE:	SHEET:	OF:
		1	1



COMPANY		FOSHAN SUNTEM MEDICAL INSTRUMENT CO., LTD	
TITLE		ENT SYSTEM : SUB-BOARD	
SHAPE	DATE	SIZE	DRAWING NO.
CHECK	DATE	D	REV
QUALITY CONTROL	DATE		23
RELEASED	DATE	SCALE	SHEET 1 OF 1







Laguna 2000 Patient Chair – Care and Maintenance

No maintenance is required except normal care and cleaning.
Clean vinyl upholstery and plastic components with mild soap and water.

Barrier covers should be used on chairs for asepsis.
Surface disinfecting chemical will eventually cause some discoloring of upholstery.

Suggested Disinfectant Application

Clean dirt and stains with mild soap and water.
Moisten an applicator with disinfectant; mildly wipe the material with the disinfectant.
Do not allow the disinfectant to soak in or dry on the surface; wipe off with soap and water.

PLEASE KEEP LIQUIDS AWAY FROM ELECTRICAL CONNECTIONS!

Most electrical control switches ARE NOT hermetically sealed.
When a switch gets wet, it can self-activate, or perhaps short out and damage other system components. Keep switches dry. Avoid costly equipment damage or failure. Avoid downtime by following these guidelines:
Please DO NOT spray disinfectants directly AT OR INTO electrical switches and controls.
Simply spray these solutions onto a cloth and wipe down the control surfaces. Be careful not to saturate the cloth.

- Any action not recommended by the manufacture may cause risk of injury or shock!
FOR ADDITIONAL INFORMATION CONTACT YOUR TPC DEALER



TPC 5 YEAR LIMITED WARRANTY

Warranty Information

All of our products sold are guaranteed to be free from defects in workmanship and materials for a 1 year from date of purchase, unless otherwise stated. TPC will repair or replace any defective part at no charge. TPC will not be responsible for labor charges or shipping charges to / from the TPC facility. This guarantee does not cover normal wear or stains on surface finish. The guarantee does not cover damage resulting from improper installation, misuse or accidents incurred in shipping and handling. All claims against the freight carrier must be initiated at the time the damaged items are received. The claim is the responsibility of the customer. We are improving our products on a continuous basis. We reserve the right to make modifications without the need for prior notification and are not obliged to modify previously manufactured items. Main drive motors parts are covered under the 5 year warranty. Main chair PCB, transformer are also covered under a 5 year warranty. Major cast components are covered under the TPC limited 5 year warranty. Upholstery, arm rests and any plastic components are covered under a 1 year warranty. Only authorized service technicians should attempt to service TPC equipment. Service performed by any unauthorized technicians may result in a voided warranty.



Laguna 2000 Chair Troubleshooting

Problem	Cause	Solution
Dental Chair does not move up or down. Chair makes no sound.	No power Blown fuse Power switch off Blown transformer	Check power source Check fuse Check power switch Check transformer voltage 12vac
Dental Chair will not move, but makes a beep sound when controls are pressed	Safety switch plate Limit switch memory erased	Check safety plate Re-program limit switches. Refer to motions of limit controls
Chair makes noise when motor is running. Squealing	Damage to drive extension	Check drive extension for damage
Dental Chair does not go low or high enough	Limit switch moved or is damaged	Adjust limit switch or replace is damaged
Unable to program pre set position 1, 2 and 3	Press SET to program presets. Button may be damaged	Press Set. Replace set button on touchpad.
My chair is on but there is no control out of the touch pad	Touch pad is not connected Touch pad is burnt out	Connect touch pad Replace touch pad
My head rest does not stay in the position that I put it in	Set screws in backrest are loose.	Tighten set screws
Chair arm rest moves very Easley.	Screw is loose that holds assembly together	Tighten screw



Laguna 2000 Chair Limitations

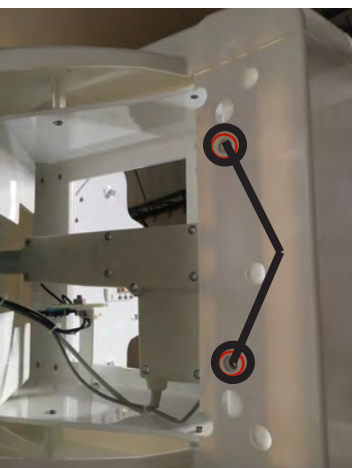
- Don't exceed the maximum weight capacity of 600 lbs or damage may occur.
- Don't let more than one patient sit in the chair at one time.
- Don't stand anywhere on the dental chair.
- Don't operate the dental chair around any flammable liquids.
- Don't exceed the maximum mode of operation time "3 min".
- Keep liquids away from electrical components.

Laguna 2000 Chair Bracket Installation procedure

1. Remove the three screws shown.



2. Remove the front cover



3. Remove the bracket cup from the chair bracket.



4. Install bracket onto the dental chair.



5. Install the side cover over the bracket as shown. Replace screws



6. Install Front cover



7. Re install the chair bracket cup to the bracket.





Lucent LED Operator Light Quick Reference Installation Guide

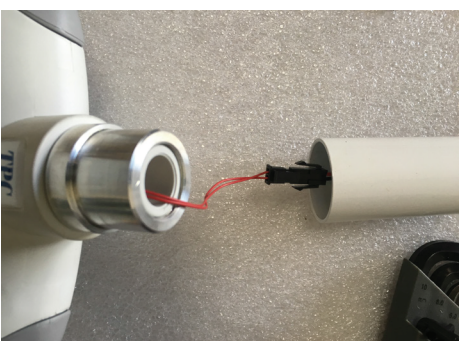
ASSEMBLING THE HEAD TO THE ARM

Remove adaptor Bushing Attach bushing to light head

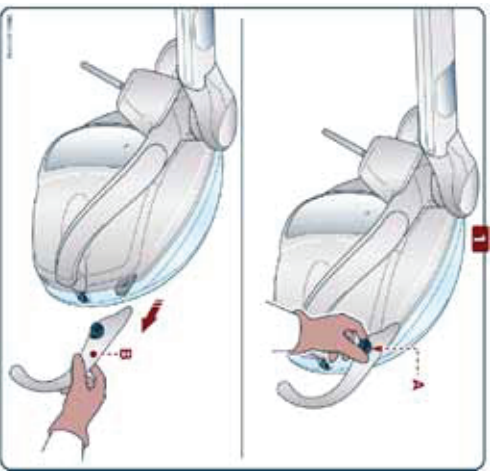


ELECTRICAL CONNECTIONS

Connect wire harness Secure light head to arm



Light Handles



Switch on / off / Adjustment
- To switch the lamp On and Off, press and release the switch to the LEFT or RIGHT side. When the lamp is switched On / Off, the device will beep (once).
DON'T push and pull the switch. It only moves in a left and right direction.

Right & Left Light handle

Light switch toggle extension

Light shield wrench

Light bushing pre installed into arm.

Signature _____ Date _____